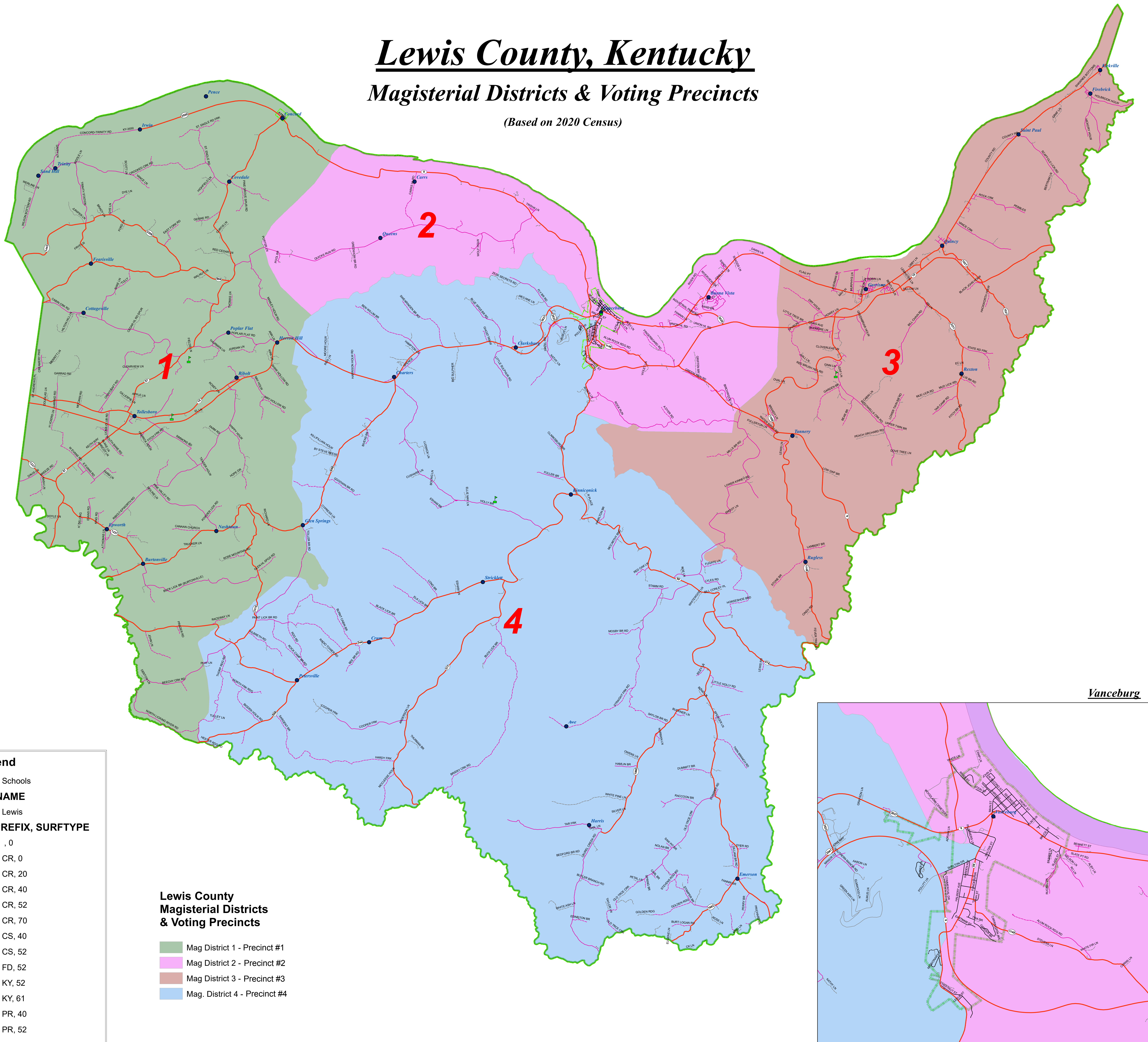


Lewis County, Kentucky

Magisterial Districts & Voting Precincts

(Based on 2020 Census)



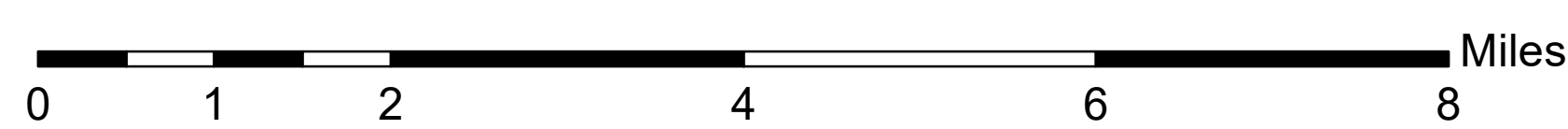
Legend

- Schools
- CO_NAME**
- Lewis
- RT_PREFIX, SURFTYPE**
- , 0
- CR, 0
- CR, 20
- CR, 40
- CR, 52
- CR, 70
- CS, 40
- CS, 52
- FD, 52
- KY, 52
- KY, 61
- PR, 40
- PR, 52
- PS, 40
- PS, 52
- PV, 20
- PV, 40
- PV, 52
- ST, 40
- Lewis_Co_Corporate_2024
- Lewis County

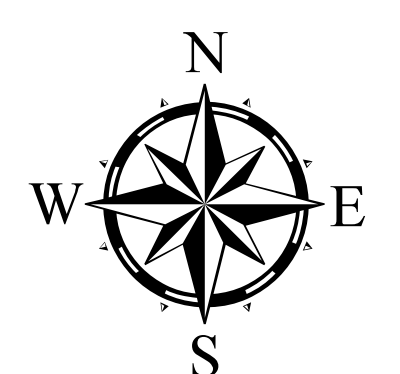
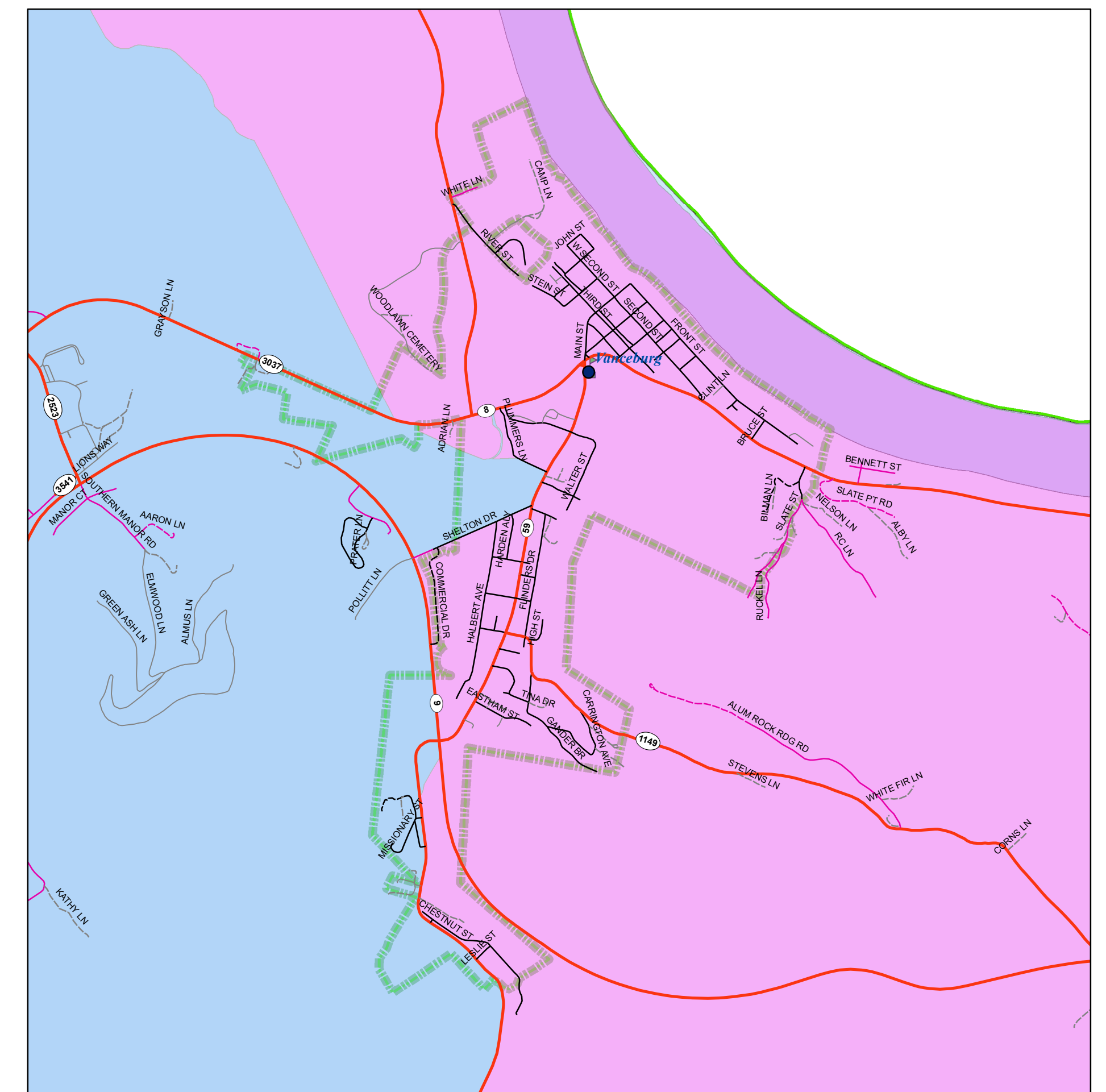
**Lewis County
Magisterial Districts
& Voting Precincts**

- Mag District 1 - Precinct #1
- Mag District 2 - Precinct #2
- Mag District 3 - Precinct #3
- Mag. District 4 - Precinct #4

- 20 – Unimproved**
- 40 – Soil, Gravel**
- 52 – Bituminous**
- 70 - Concrete**



Vancsburg



Kevin Wells
GIS Manager
September 2024